

## The ORIEN Alliance

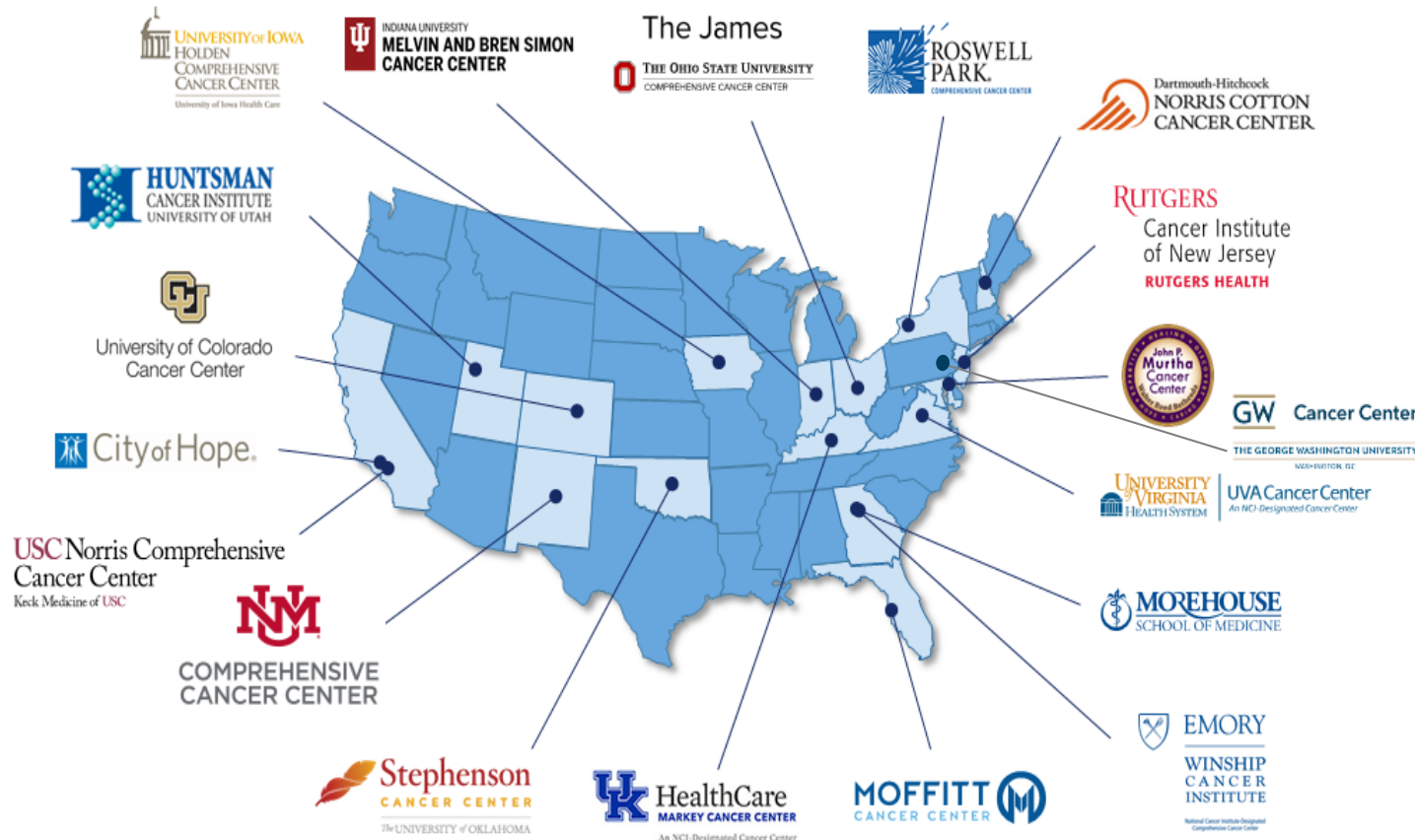
Accelerating cancer research and delivering hope through collaborative learning and partnerships

Ming Poi  
Senior Director, Scientific Affairs  
M2Gen



# The ORIEN Alliance: Mobilizing the Nation's Leading Cancer Centers

*ORIEN consists of 19 of the nation's leading cancer centers to deliver informatics-based solutions to accelerate therapy discovery, development and delivery of personalized medicine.*



- Scientific Leadership  
The Network includes some of the nation's leading cancer centers, clinicians and researchers
- Clinical Trials Network  
M2Gen has implemented streamlined site activation protocols, including single IRB and scientific review committee to accelerate activation and enrollment
- Serving Patients  
ORIEN represents a cross section of diverse patients, improving research and clinical trial coverage and health equity



# Patient Partnership: Creating a Research Ecosystem

Through the Total Cancer Care<sup>®</sup> consent, the oncology data gathered enables patient engagement in research projects and clinical trials

10+  
years of operating history

19  
leading cancer centers

280,000+  
patients consented to date

25K-30K  
patients added annually

## TOTAL CANCER CARE<sup>®</sup>



## Patients consented to TCC agree to:

Be followed throughout their lifetime,  
enabling collection of longitudinal  
clinical data

Be re-contacted for future studies

Donate specimens\* to be used to  
generate laboratory data

\*Subject to availability

## Who We Are

- ◆ Oncology-focused health informatics solutions company
- ◆ Leverages **clinical and molecular data** to accelerate the discovery, development and delivery of personalized therapies
- ◆ Founded in 2006 to operationalize the **Total Cancer Care® (TCC)** protocol, one of the world's largest observational studies in cancer
- ◆ TCC provides a harmonized approach to link longitudinal clinical data with molecular information, enabling a much deeper understanding of a patient's disease.

**TOTAL CANCER CARE**

## What We Do

- ◆ Facilitates the **Oncology Research Information Exchange Network® (ORIEN)**, a unique alliance of 19 of the nation's leading cancer centers, which have implemented the TCC Protocol
- ◆ Develops and commercializes **proprietary software solutions and data-based products** as well as data collection, bioinformatics, and clinical trial support services.
- ◆ Our core solution, **ORIEN AVATAR®**, generates annotated longitudinal clinical and molecular data to power the discovery and development of novel and more effective treatments

**AVATAR**

# **ORIEN Goals:**

## Discover, Translate and Deliver

---

- 1** Using Data Science to Accelerate Discovery Through Data Sharing
- 2** Anticipating Need and Tracking Patients for Biomarker-Driven Clinical Trials
- 3** Developing an Evidence-based Clinical Decision Support Tool at Point of Care

# ORIENT Guiding Principles

## COLLABORATION

Commit to using a common protocol to ensure data quality and promote partnerships in research

---

## INCLUSIVENESS

Participation by Cancer Centers, Community Providers and Patients in their respective communities

---

## ACCESSIBILITY OF DATA

Real-time access to research data by using a hybrid model of both a centralized data warehouse and a federated component: a network model

---

## PARTNERSHIPS

Establish trusted business relationships within and across sectors to achieve long-term program sustainability

# M2Gen is the Operational & Commercial Engine for ORIEN



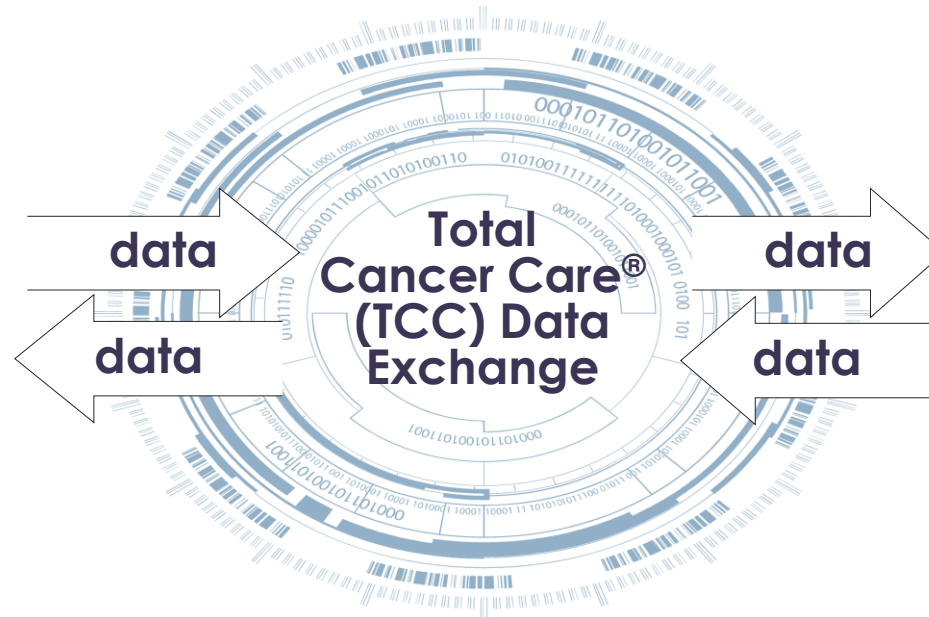
## Collaboration & Inclusiveness

Participation by Cancer Centers in their respective communities



## Operations

Accessibility of Data using federated and central data warehouse



## Partnership & Commercialization

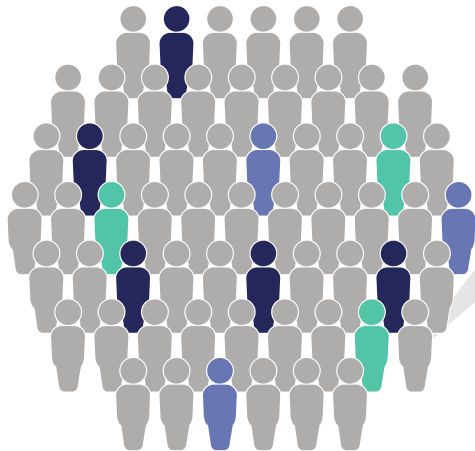
Commercial Partnerships to achieve long-term program sustainability



# ORIEN Avatar: Power of Cohort Surveillance

*Investigate the impact of new targeted therapies*

*Using TCC Protocol, collect genotypic and phenotypic information to assign patients to an “in silico” community*



Biospecimens

Molecular Data

Longitudinal Data

- Clinical outcomes
- Healthcare utilization
- Patient-reported behaviors and outcomes

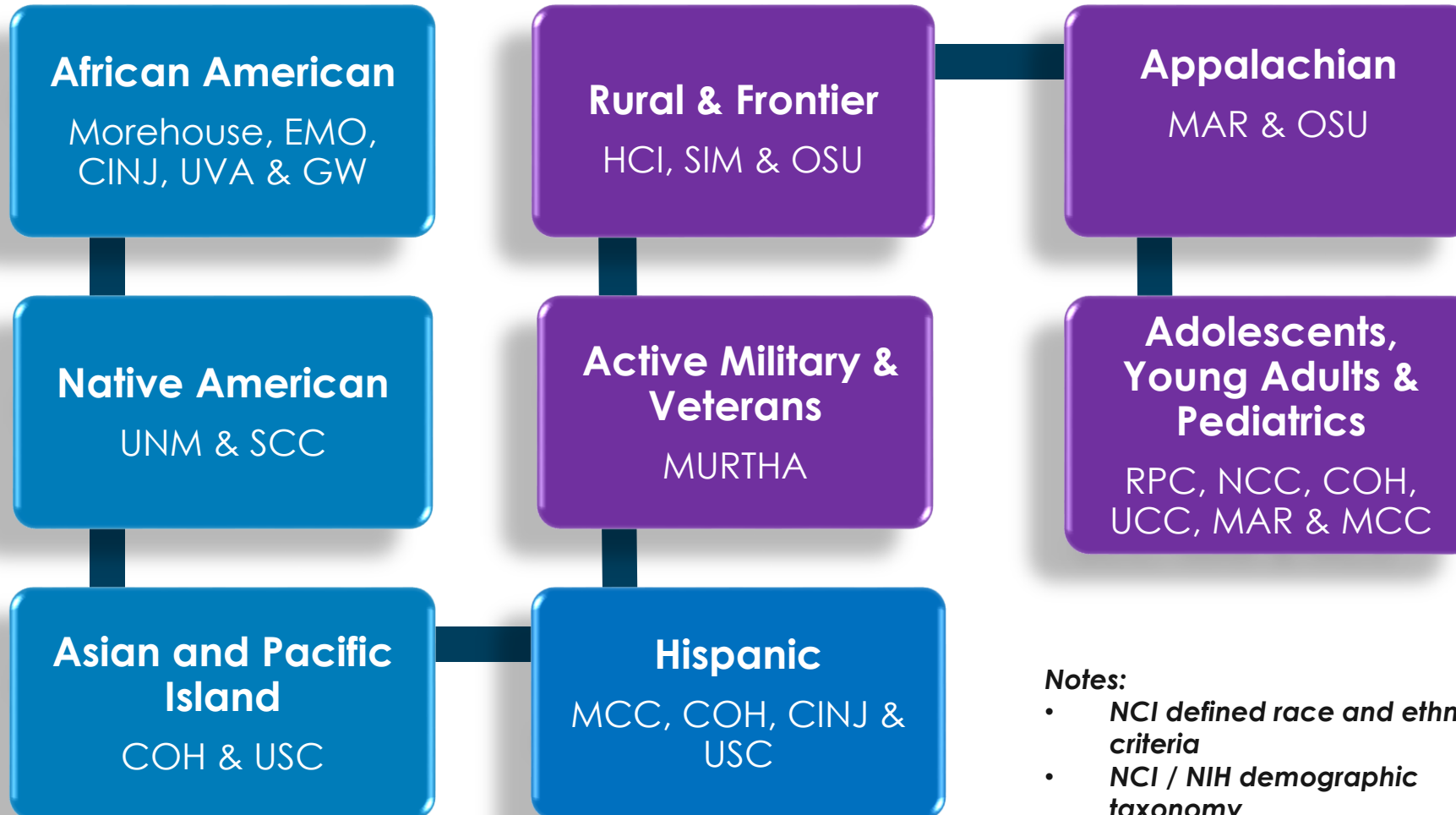


*Providing a system of continuous learning and ability to anticipate need*



# Patient Demographics Across ORIEN

Race and Ethnicity



Population Demographics

**Notes:**

- NCI defined race and ethnicity criteria
- NCI / NIH demographic taxonomy

# ORIEN Patient Advisory Council Members



Wendy Harpham,  
MD, FACP



Melissa Hudson,  
MD



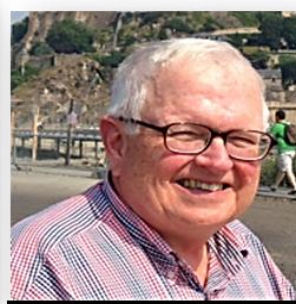
Deborah Collyar



Matthew Loscalzo,  
LCSW



Barney D. Morris



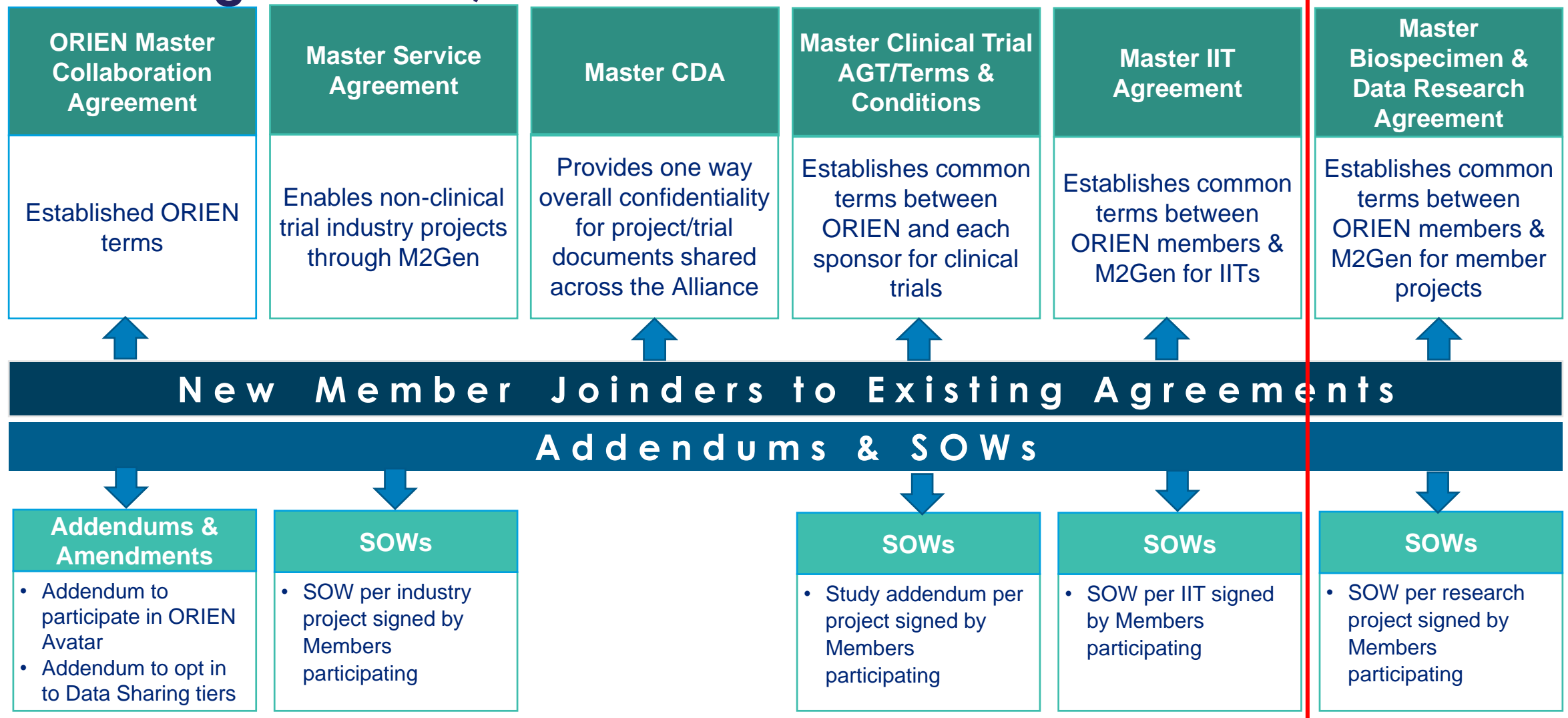
Frederic G. Sanford,  
MD



Joseph Simone,  
MD

NAME	TITLE/POSITION
<b>Wendy Harpham, MD, FACP (Chair)</b>	Author/Columnist on Survivorship; Survivor
<b>Melissa Hudson, MD (Chair-Elect)</b>	Director, Cancer Survivorship, St Jude
<b>Deborah Collyar</b>	Founder, Patient Advocates in Research; Survivor
<b>Matthew Loscalzo, LCSW</b>	Exec Director Supportive Care Medicine, COH
<b>Barney D. Morris</b>	Member, PCORI's Prostate Cancer Advisory Round Table; Survivor
<b>Rear Admiral (Retired) Frederic G. Sanford, MD</b>	Past Chairman Radiology, Naval Hospital San Diego; Caregiver
<b>Joseph Simone, MD (Emeritus)</b>	Clinical Director emeritus, Huntsman Cancer Institute

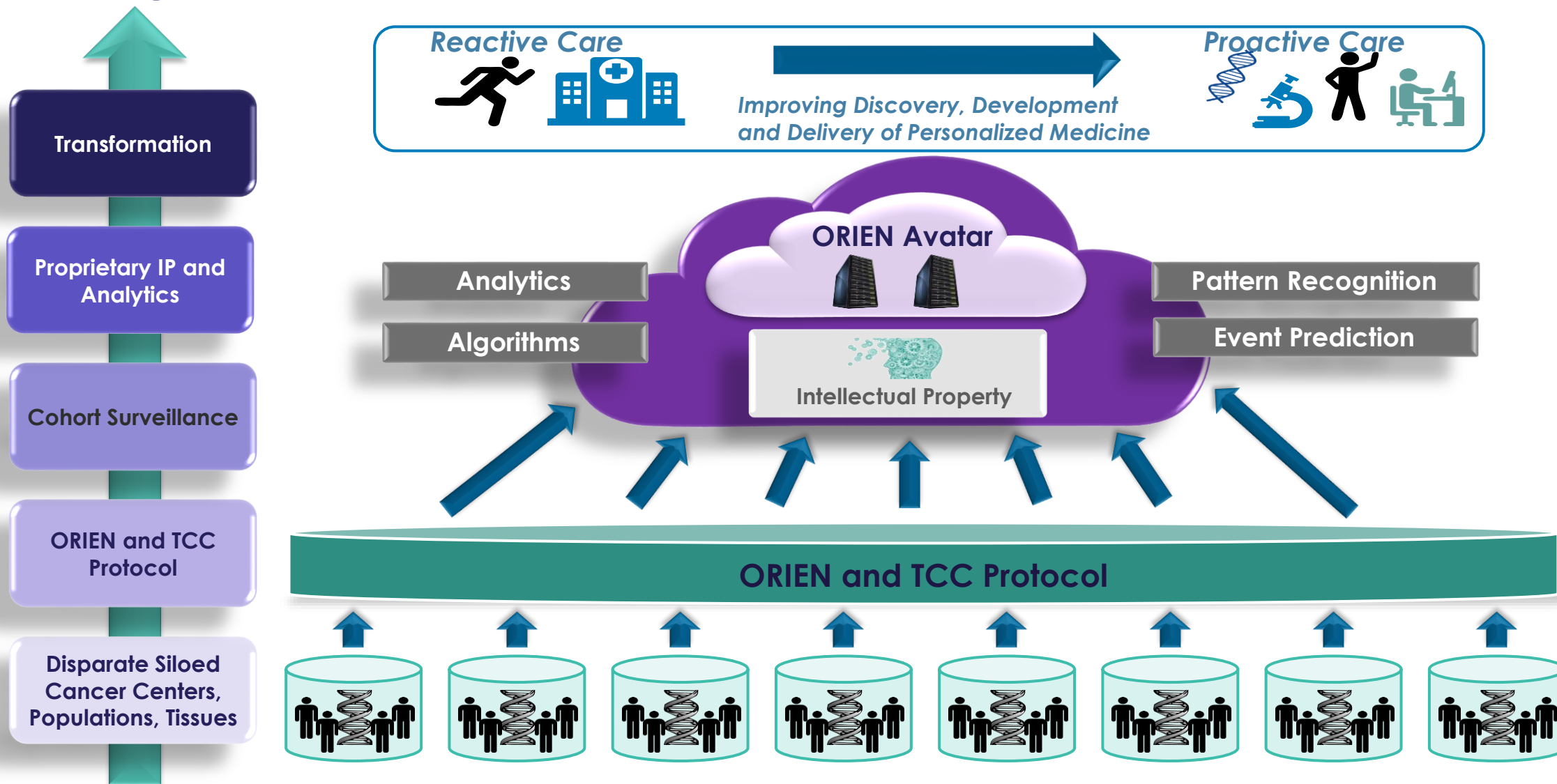
# ORIEN Contracting Approach: Master Agreements, Joinders and SOWs



# ORIEN Team Science: Intermember Research Projects



# Moving from Reactive to Proactive to Anticipate Patient Need



# M2GEN Solutions: AVATAR

The depth and breadth of AVATAR molecular data enables identification of novel biomarkers associated with response to a wide range of oncology treatments

Cancer Type	#	Cancer Type	#
Breast	1809	Bladder	459
Colorectal	1360	Other GI	431
Head and Neck	998	Lymphoma	350
Sarcoma	931	Brain	262
Lung	899	Melanoma	232
Leukemia	862	Gastric	193
Thyroid	835	Other GYN	172
Myeloma	818	Other	170
Kidney	813	Other GU	150
Prostate	807	Liver	133
Endometrial	767	Other Cutaneous	115
Pancreatic	658	Esophageal	89
Ovarian	664	More than one disease	121
<b>Total AVATAR Patients</b>			<b>15,098*</b>



## Whole Exome Sequencing

19,396 genes sequenced at 300x coverage, ~440 cancer genes sequenced at 600X average depth, with matched normal for accurate somatic mutation calling



## RNA Sequencing

Characterization of tumor transcriptome, including gene expression, fusion calling and other relevant information

Biomarkers	Analysis Capabilities	
MSI Status	SNVs & Indels	Microsatellite Instability (MSI)
Acquired Resistance	Gene Fusions	Cancer Type Prediction
Tumor-infiltration/ T-Cell infiltration	Gene Expression Signatures	Somatic Mutation Signatures
Tumor Microenvironment	Copy Number Analysis	HLA Typing
Presence of Neoantigens	Tumor Mutational Burden (TMB)	Neoantigen Prediction

# ORIEN Clinical Trials Network (OCTN)

ORIEN members have developed an efficient, timely and ethical scientific review of industry clinical trials brought forward by M2GEN and are committed to expediting trial activation

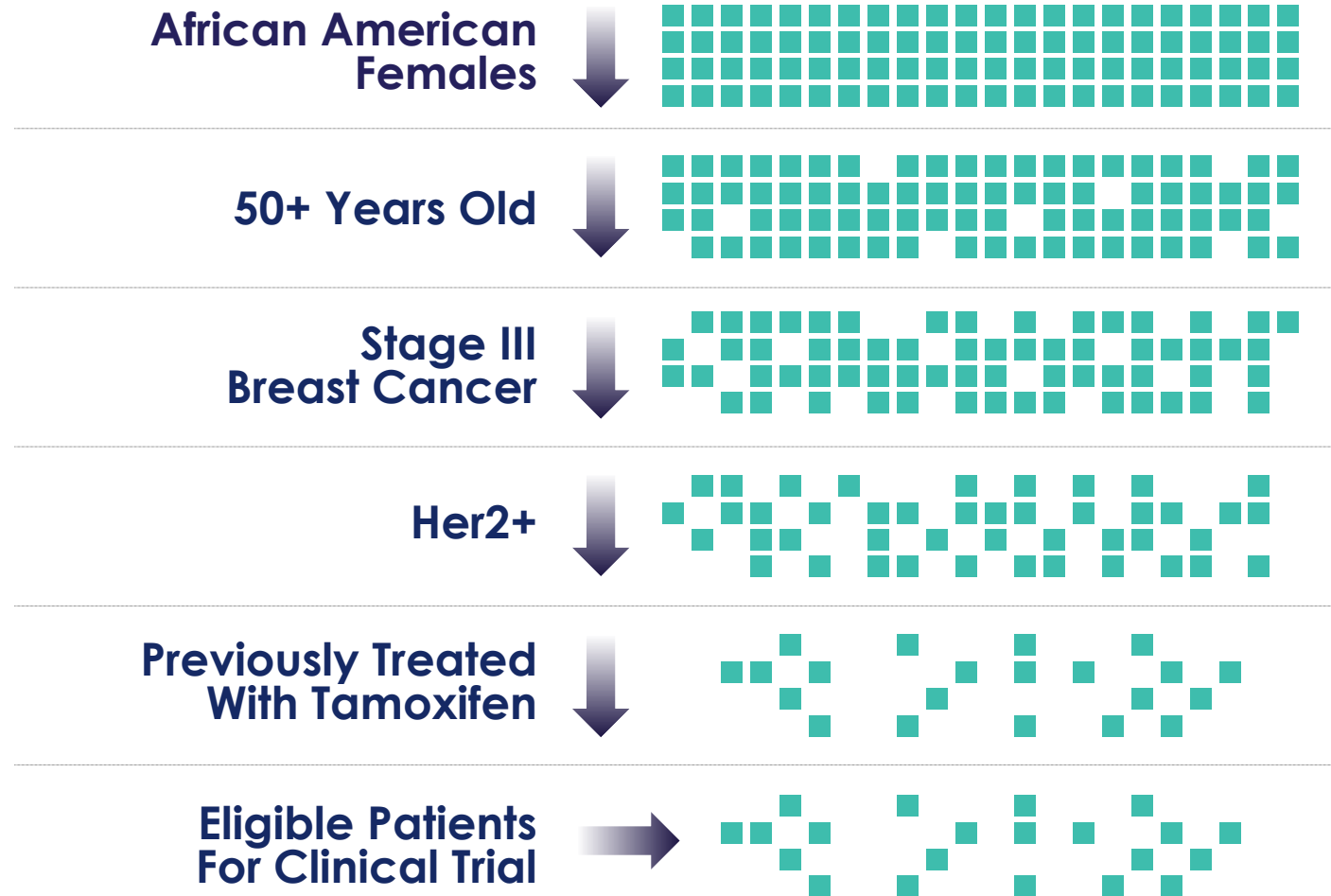
## Goals

- Foster clinical research across ORIEN members
- Enhance partnership among member sites and industry sponsors
- Conduct efficient and rapid clinical trials
- Produce clinical trials of high data quality

Item	Description/Status
Single SRC	<ul style="list-style-type: none"> <li>▪ Working with NCI, a mechanism for single SRC review has been established for OCTN</li> <li>▪ <b>Status: Implemented</b></li> </ul>
Single IRB	<ul style="list-style-type: none"> <li>▪ Each ORIEN member has agreed to utilize a single commercial IRB (WIRB) for review of new clinical trials through OCTN</li> <li>▪ <b>Status: Implemented</b></li> </ul>
Patient Identification	<ul style="list-style-type: none"> <li>▪ ORIEN physician's engagement and M2GEN informatics tools to track patients (TCC/AVATAR patients) provide the structure for proactive and ongoing patient identification and trial matching/enrichment</li> <li>▪ <b>Status: Implemented</b></li> </ul>
Master Service Agreement	<ul style="list-style-type: none"> <li>▪ M2GEN serves as central contracting point for service agreement for clinical trials</li> <li>▪ <b>Status: In Development</b></li> </ul>
Single Trial Budget	<ul style="list-style-type: none"> <li>▪ Develop harmonized budget template that consider regional cost factors</li> <li>▪ <b>Status: In Development</b></li> </ul>

# OCTN - Accelerating Trial Enrollment

Finding the right patient, the right treatment at the right time





# Real World Data for FDA Submissions

- M2GEN executed a license with one of the largest pharmaceutical companies in the US oncology market to provide RWD to create RWE of value for client to file for FDA approvals of new therapeutics
- The data license is focused on five different heme indications
- To support data collection for FDA submission, M2GEN implemented a 21CFR Part 11 compliant processes for data capture, provenance and delivery
- Subsequent submissions are planned through 2024

# Alliance for Digital Pathology Research Interests

<b>STANDARDS</b>		<b>TRUTHING</b>		<b>ML MODELS &amp; USE CASES</b>	
Standard terminology and ontology for annotation and data merger		Database of ground truth datasets		Common evaluation framework for AI/ML	Mock submission for continuously learning algorithm
		Competitions for AI accuracy and generalizability			
General topics in standards		General topics in truthing		Human interface study	
		General topics in payor strategy		<b>SLIDE SCANNING</b>	
CLIA for remote signout		<b>PAYOR STRATEGY</b>		<b>PRE-ANALYTICS</b>	
Biospecimen master agreement for digital pathology		General topics in payor strategy		General topics in pre-analytics	
		Patient perspective input (PPI) for digital pathology and AI/ML		Pre-analytical tools	
				Using phantoms to meet regulatory standards removing need for pathologist validation	
				General topics in slide scanning	Scanning automation
				Survey of pre-analytics	

(<https://digitalpathologyalliance.org/november>)

# ORIEN-Alliance of Digital Pathology Interest Alignment



## INTEREST

Truthing



## VALUE

Availability and integration with other data, molecular and clinical elements



## STRENGTH

Datasets from multiple sites, including expanding the dataset as data source and algorithm needs grow

# ORIEN-Alliance of Digital Pathology Interest Alignment



## INTEREST

Payor Strategy



## VALUE

Participate in Patient Preference Information (PPI) study for device evaluation; premarket clinical studies, benefit-risk assessments, and post-market evaluation



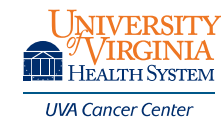
## STRENGTH

- A patient data-driven ecosystem through the Total Cancer Care Protocol
- A dedicated patient advisory council

# Acknowledgments

*Special Thanks to:*

Total Cancer Care Protocol Patients



# Questions