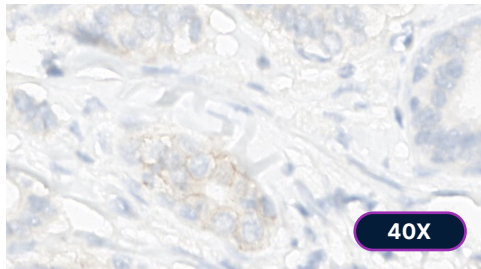
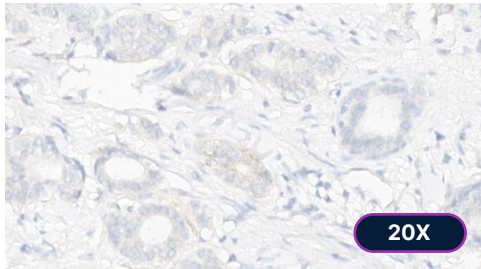


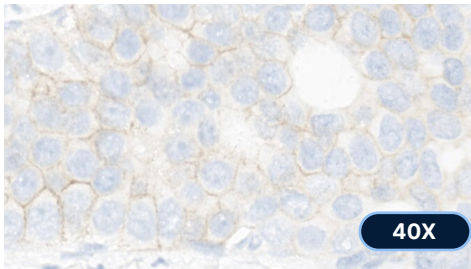
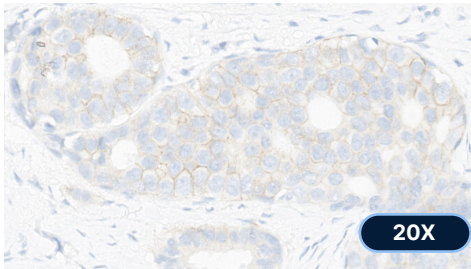
HER2 IHC interpretation

A QUICK REFERENCE GUIDE

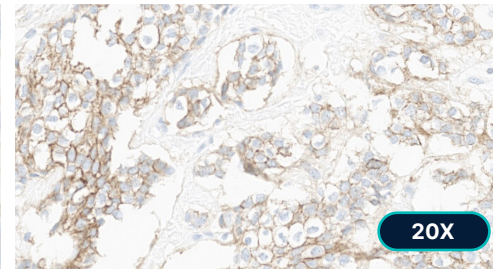
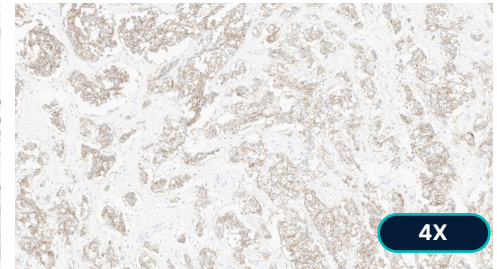
IHC 0



IHC 1+



IHC 2+



EVALUATING STAINING PATTERN & INTENSITY^{1,2}

IHC 0

No staining visible at any magnification, **4X(5X)*** to **40X** OR hardly perceptible at **4X(5X)*** and **10X**, visible at **20X** and confirmed at **40X**

IHC 1+

Hardly perceptible at **4X(5X)*** and **10X**, visible at **20X** and confirmed at **40X**

IHC 2+

Visible at **4X(5X)***, confirmed at **10-20X**

IHC 3+

Readily visible "chicken wire" pattern at **4X(5X)***

*Depending on the available type of magnifiers, pathologists will use 4X or 5X



When close to the cut-off point, count 100 cells in three representative fields, at 40X or higher.⁴

This resource is intended for use by US healthcare professionals only

©2022 Daiichi Sankyo, Inc. and AstraZeneca. PP-US-8201a-1324 05/22

1. AstraZeneca and Daiichi Sankyo. Data on file. REF-18100. 2022. 2. Franchet C et al. Annales de Pathologie 2021; 41(6): 507-520. 3. AstraZeneca and Daiichi Sankyo. Data on file. REF-18013. 2022. 4. Interpretation Guide PATHWAY anti-HER-2/neu (4B5) Rabbit Monoclonal Primary Antibody Staining of Breast Carcinoma, 1499100 Rev K, 2019-07-15.

Identifying low levels of HER2 expression in breast cancer³

